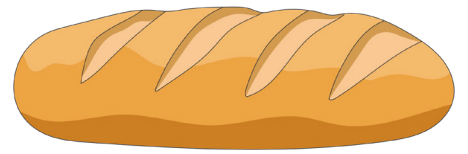


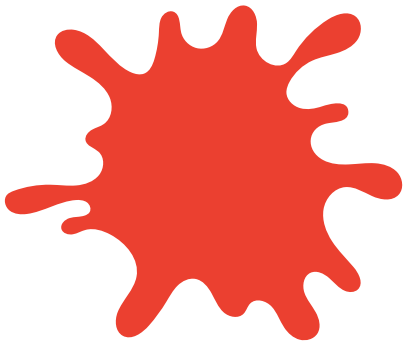
bär



här



bröd



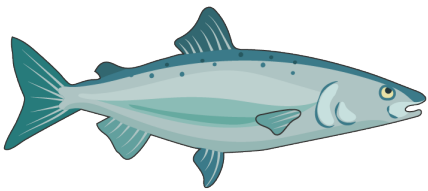
röd



dill



sill



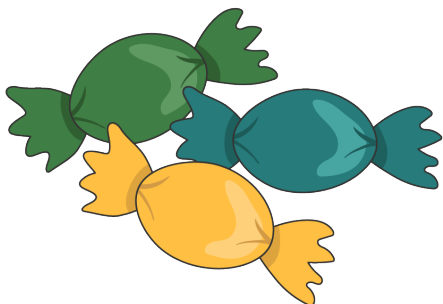
fisk



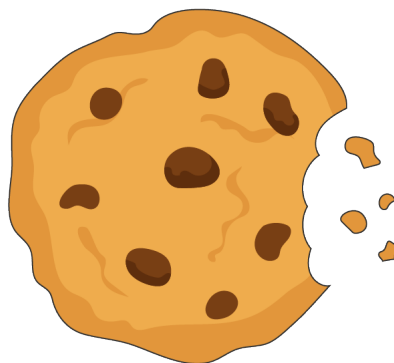
disk



gröt



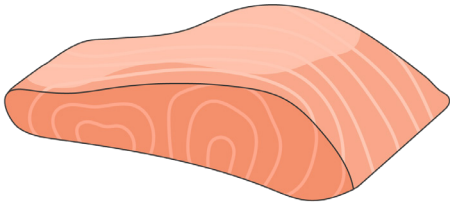
söt



kaka



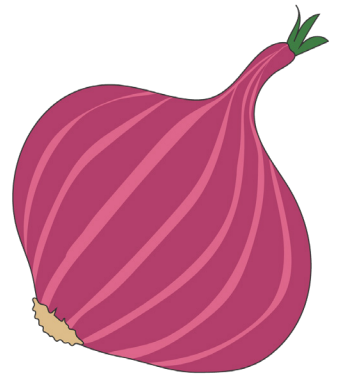
baka



**lax**



**sax**



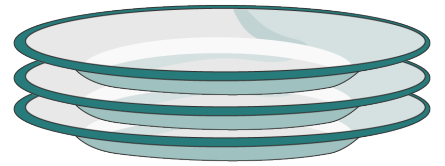
**lök**



**hök**



**mat**



**fat**



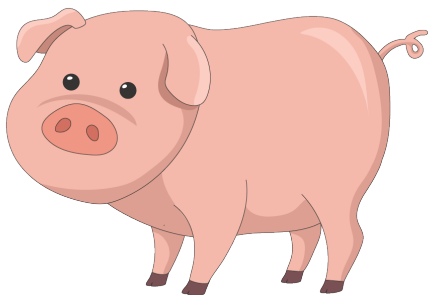
**matsvinn**



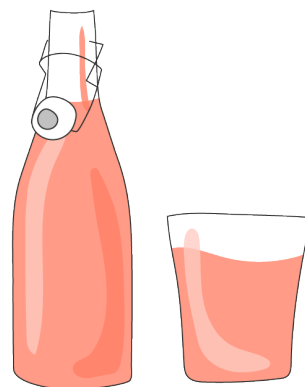
**spinn**



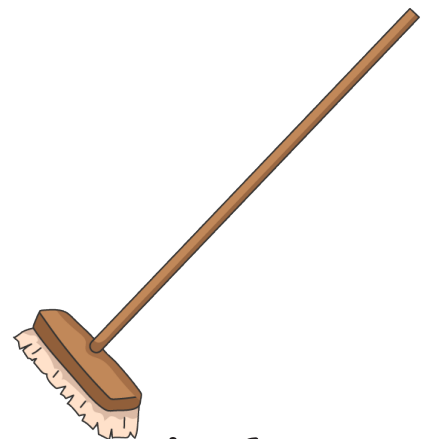
**ris**



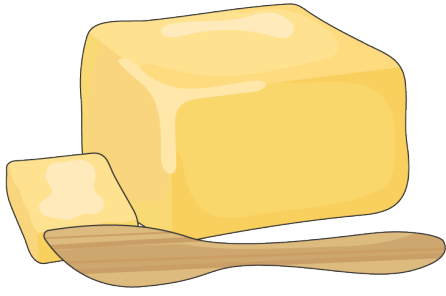
**gris**



**saft**



**skaft**



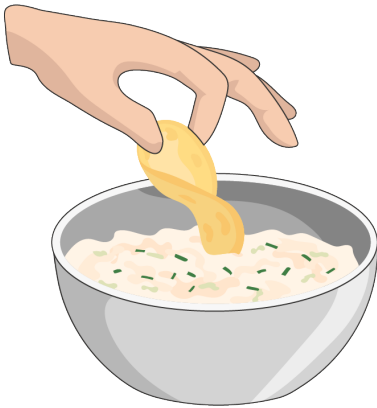
**smör**



**hör**



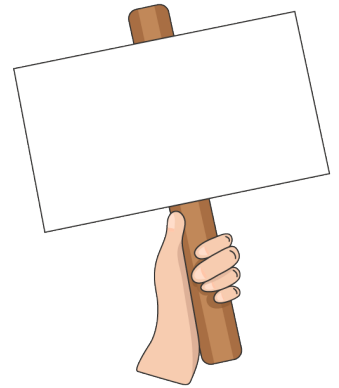
**soppa**



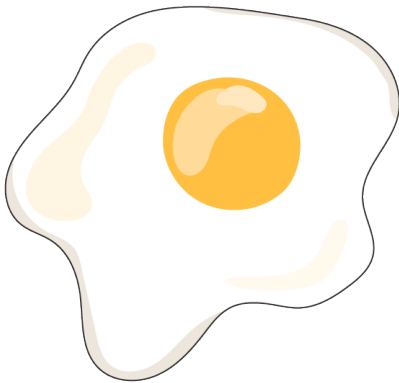
**doppa**



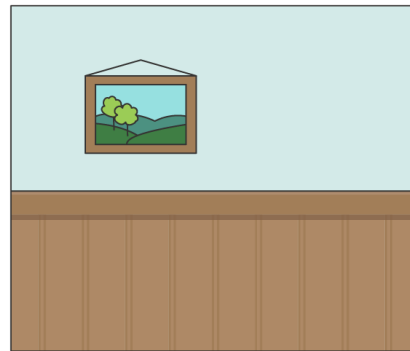
**sylt**



**skylt**



**ägg**



**vägg**